



OFFICE BUILDING - FOR SALE **6,820 Square Feet**

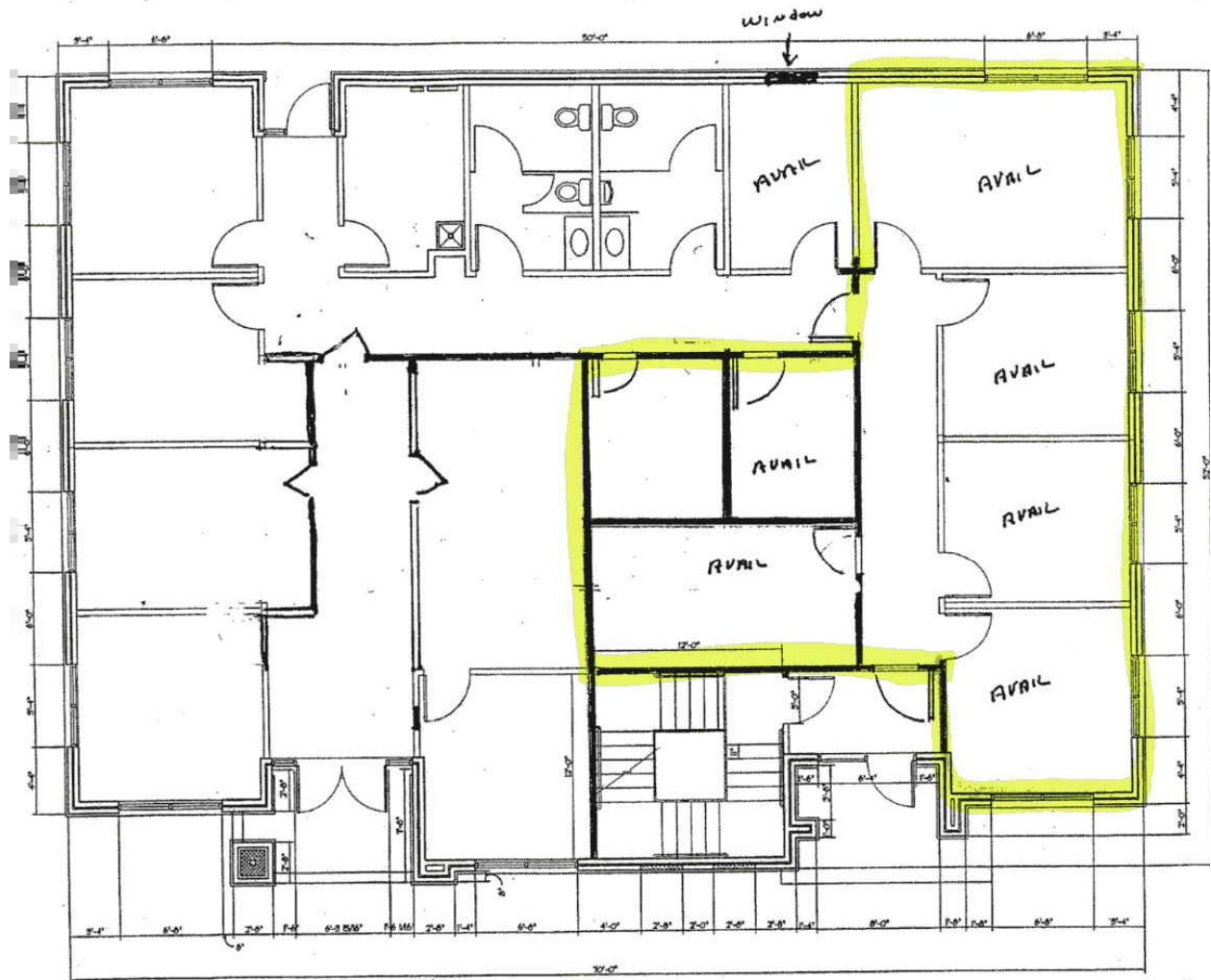


HOWELL RIDGE Office Park - 538 Old Howell Road

- Class A- owner/contractor built for low maintenance and lasting value
- Rent roll and detailed information available on request
- Currently occupied by three tenants with 2,000 sf (2nd generation) available
- Excellent owner/occupied or investment property in established office park
- Located in County 1.5 miles from I-385, near banks, shopping, etc.
- ***Offering Price: \$729,000***

For more information, call: Chris Covington, CCIM 483-8811
Write: chris@covingtoncom.com

1/8" scale



TOTAL 1,535.5

First Floor Plan
and available unit